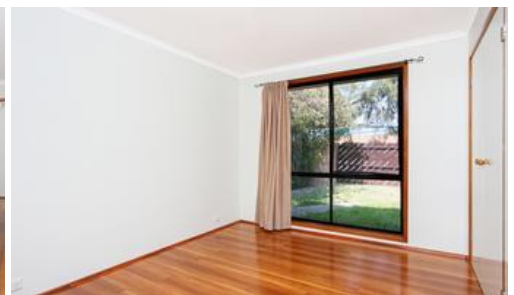




**Unit 22, 18 Cromwell Cct, Isabella Plains**



## Affordable 3-Bedroom Home with Big Backyard and Views!

Mates Rates Real Estate is delighted to be marketing this neat-as-a pin, brick home at 22/18 Cromwell Circuit, Isabella Plains.

Beautifully maintained and presented, this stylish home will be comfortable and joy to live in.

Inside, you are greeted by a large living space and dining area which has been freshly painted. There are stunning floating timber floors throughout, and the home has a sunny Northerly aspect.

The kitchen is neat, functional, has plenty of cupboard space and a lovely view over the backyard.

Accommodation includes 3 bedrooms, 2 of which have built-in wardrobes.

The bathroom is sparkling clean, features new shower screen and vanity plus there is a separate W/C.

The home is heated and cooled by reverse-cycle air-conditioning, and there is electric hot-water.

What you will really love are the outdoor areas. The backyard has views

3 1 1

**Price** SOLD for \$395,000  
**Property Type** residential  
**Property ID** 123  
**Floor Area** 96 m2

### Agent Details

James Barnsley - 0413 884 408

### Office Details

Queanbeyan  
 PO Box 628 Queanbeyan NSW 2620  
 Australia  
 0413 88 44 08



**MATES RATES**  
 REAL ESTATE AUSTRALIA

The above information provided has been furnished to us by the vendor/s. We have not verified whether or not that information is accurate and do not have any belief in one way or the other in its accuracy. We do not accept any responsibility to any person for its accuracy and do no more than pass it on. All interested parties should make and rely upon their own inquiries in order to determine whether or not this information is in fact accurate.